

Lawrence Public Schools Bond Construction Update

December 14, 2015

Kyle Hayden
Assistant Superintendent – Business & Operations

April, 2013 – USD 497 Voters Approved a No Mill Levy Increase Bond Issue for \$92.5 million

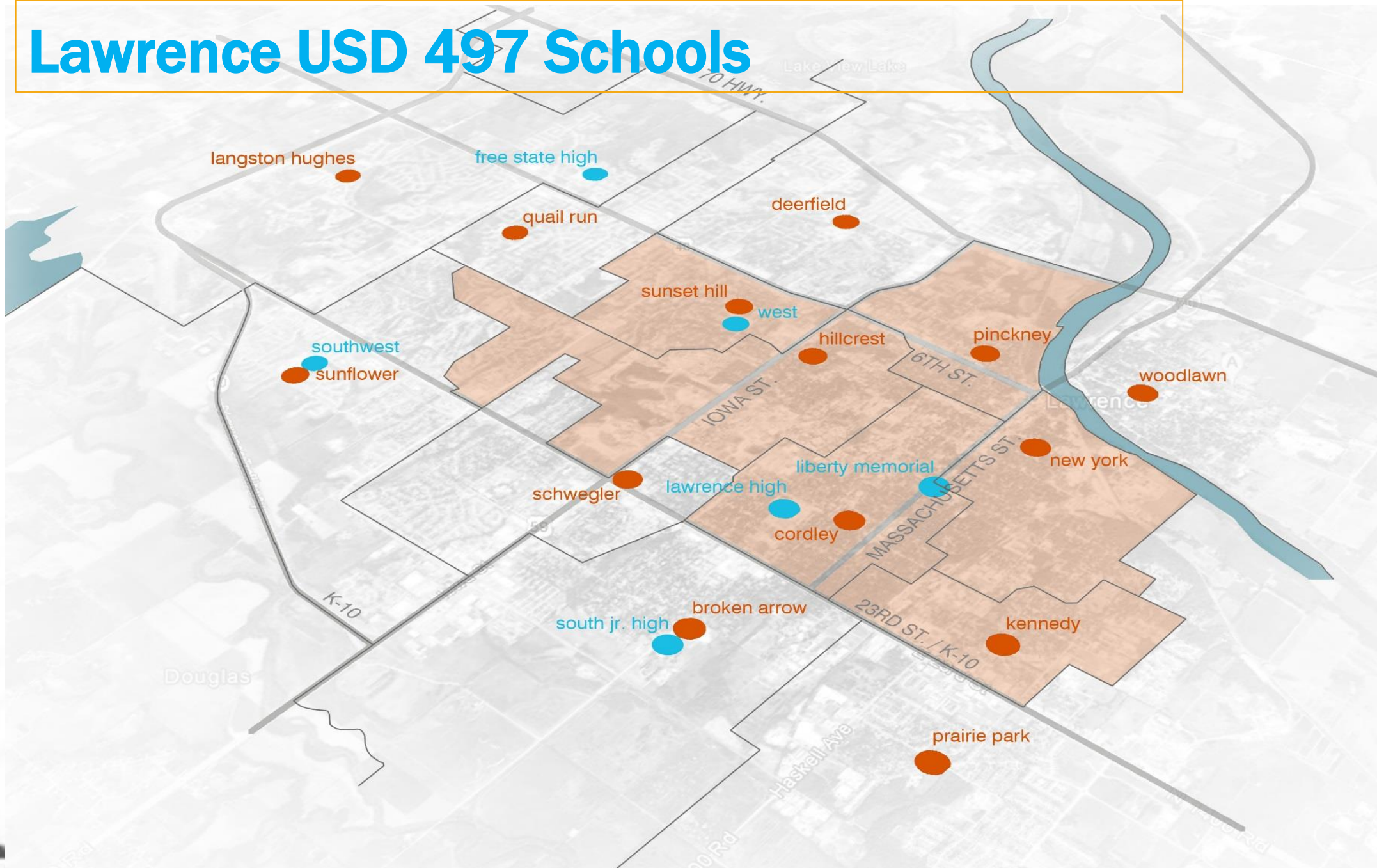
★ ***Improving Facilities***

★ ***Enhancing Technology***

★ ***Expanding Career & Technical Education***



Lawrence USD 497 Schools



Summary of Expenditures

Bond Funds and Capital Outlay



School	Bond Funds	Bond Interest	Total Bond	Capital Outlay	Total
Langston Hughes	3,261,322		3,261,322		3,261,322
Cordley	8,499,292		8,499,292	228,389	8,727,681
Hillcrest	8,022,590		8,022,590	230,029	8,252,619
New York	5,548,899		5,548,899		5,548,899
Quail Run	3,966,172		3,966,172	936,482	4,902,654
Woodlawn	2,354,883		2,354,883		2,354,883
Kennedy	8,640,931		8,640,931		8,640,931
Sunset Hill	9,503,579		9,503,579		9,503,579
Broken Arrow	1,208,448		1,208,448		1,208,448
Prairie Park	763,406		763,406		763,406
Schwegler	2,876,754		2,876,754	331,548	3,208,302
Deerfield	3,773,629		3,773,629	229,679	4,003,308
Sunflower	3,337,699		3,337,699		3,337,699
Pinckney	6,772,730		6,772,730		6,772,730
LMCMS	281,074		281,074	704,173	985,247
SMS	386,839		386,839	88,100	474,939
SWMS	415,093		415,093	100,600	515,693
WMS	1,497,027		1,497,027	572,306	2,069,333
LCCC (Career and Technical)	5,475,189	1,489,597	6,964,786	212,361	7,177,147
LFSHS	4,010,020		4,010,020	641,943	4,651,963
LHS	3,672,600		3,672,600	660,038	4,332,638
Technology/Security/Projectors	5,230,935		5,230,935	351,690	5,582,625
Playground Equipment			-	124,624	124,624
Food Service Equipment**	1,000,889	21,487	1,022,376	95,440	1,117,816
Furniture and Fixtures *			-	2,300,000	2,300,000
Phasing	2,000,000	791,239	2,791,239		2,791,239
	\$ 92,500,000	\$ 2,302,323	\$ 94,802,323	\$ 7,807,402	\$ 102,609,725

**Includes furniture for blended classrooms*

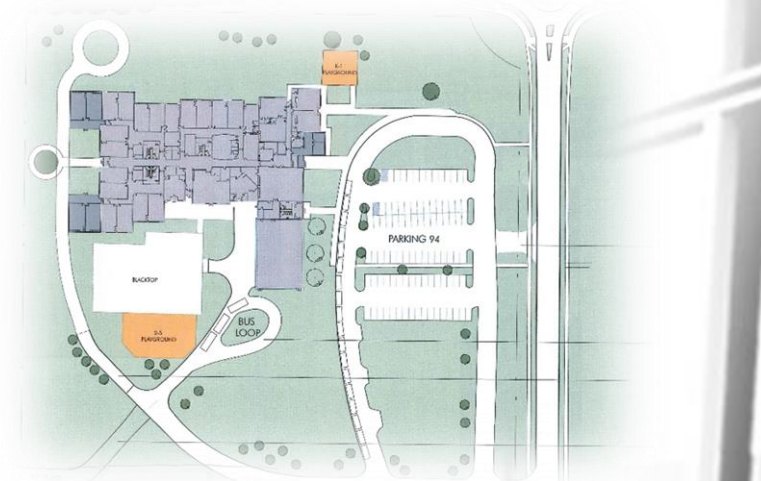
***Additional \$119,758 kitchen equipment was purchased with a KSDE grant*

Langston Hughes Elementary School

Completed in November 2014

Bond Funds	Capital Outlay	Total
3,261,322	0	3,261,322

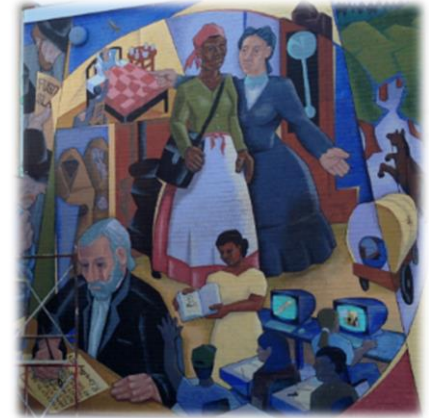
- Secure entry and new office area addition
- New classrooms w/ a storm shelter area
- Learning pockets and dining/commons improvements
- New door hardware & electronic lock system
- Mechanical, electrical, plumbing improvements
- Site improvements – driveway, parking, sidewalks



Cordley Elementary School

Completed in August 2015

Bond Funds	Capital Outlay	Total
8,499,292	228,389	8,727,681



- New 19th St. entrance w/ secure entry
- New library media center, learning pockets, kitchen/dining commons
- New classroom addition and renovation of existing classrooms and improved storm shelter area
- New door hardware & electronic lock system
- Mechanical, electrical, plumbing improvements
- Site improvements – parking, sidewalks, playground, landscaping



Hillcrest Elementary School

Completed in August 2015

Bond Funds	Capital Outlay	Total
8,022,590	230,029	8,252,619

- New classrooms, art room, music room, gymnasium, media center, kitchen and commons and storm shelter area
- New Hilltop Drive entrance, office areas and secure entry
- Remodeling of remaining existing classrooms
- New door hardware & electronic lock system
- Mechanical, electrical, plumbing improvements
- Site improvements – parking, sidewalks, playground, landscaping



New York Elementary School

Completed in August 2015

Bond Funds	Capital Outlay	Total
5,548,899	0	5,548,899

- New classroom addition and learning pockets
- Secure entry and remodeled office area
- New kitchen and dining/commons and a storm shelter area
- Remodeled existing classrooms and gymnasium
- New door hardware & electronic lock system
- Mechanical, electrical, plumbing improvements
- Site improvements – parking, sidewalks, playground, landscaping



Quail Run Elementary School

Completed in August 2015

Bond Funds	Capital Outlay	Total
3,966,172	936,482	4,902,654

- Secure entry and office area remodel
- New classroom addition w/ storm shelter area
- Interior improvements including commons area and gym remodel
- New door hardware & electronic lock system
- New HVAC system and metal roof replacement



Woodlawn Elementary School

Estimated Completion Date: January 2016

Bond Funds	Capital Outlay	Total
2,354,883	0	2,354,883

- New secure entry
- New classrooms, art room, music room and a storm shelter area
- Interior improvements of all existing spaces and creation of multiple learning pockets
- New door hardware & electronic lock system
- Mechanical, electrical, plumbing improvements
- Site improvements – playground and additional parking



Kennedy Elementary School

Estimated Completion Date: March 2016

Bond Funds	Capital Outlay	Total
8,640,931	0	8,640,931

- New secure entry and office addition
- New classrooms and learning pockets w/ shelter area
- Remodel of existing classrooms and enclosing interior courtyard for flex learning space
- New door hardware & electronic lock system
- Mechanical, electrical, plumbing improvements
- Site improvements including new drive and parking area, playground and landscaping



Sunset Hill Elementary School

Estimated Completion Date: March 2016

Bond Funds	Capital Outlay	Total
9,503,579	0	9,503,579

- New secure entry and office addition
- New classrooms w/ shelter area
- New gymnasium, kitchen/commons area and learning pockets throughout
- Expanded capacity from 300 to over 500 students to accommodate community growth
- Remodel of existing classrooms and library media expansion
- New door hardware & electronic lock system
- Mechanical, electrical, plumbing improvements
- Site improvements - new drive and parking area, new south side main entrance



Broken Arrow Elementary School

Estimated Completion Date: August 2016

Bond Funds	Capital Outlay	Total
1,208,448	0	1,208,448

- New secure entry
- ADA accessible ramp to gymnasium and commons
- Music room remodel for ADA accessibility
- Restroom remodels and flexible learning area improvements
- New door hardware & electronic lock system
- Interior paint and flooring improvements



Prairie Park Elementary School

Estimated Completion Date: August 2016

Bond Funds	Capital Outlay	Total
763,406	0	763,406

- New secure entry w/ office area remodel
- Interior improvements throughout commons and corridors w/ addition of flexible furniture to learning pods
- Restroom improvements
- New door hardware & electronic lock system
- Mechanical, electrical, plumbing improvements



Schwegler Elementary School

Estimated Completion Date: August 2016

Bond Funds	Capital Outlay	Total
2,876,754	331,548	3,208,302

- New secure entry and new relocated office area
- Addition of a new art classroom w/ shelter area
- Renovated courtyard for improved outdoor learning experiences
- New door hardware & electronic lock system
- Mechanical, electrical, plumbing improvements
- Remodeled library media center and flexible learning spaces



Deerfield Elementary School

Estimated Completion Date: December 2016

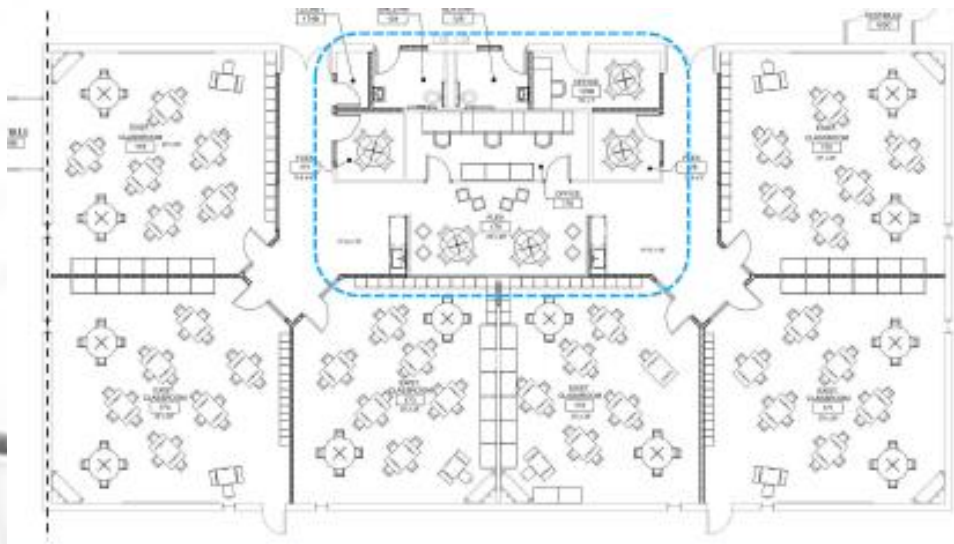
Bond Funds	Capital Outlay	Total
3,773,629	229,679	4,003,308

- New secure entry
- New classroom and learning pocket addition w/ shelter area
- Interior improvements of all existing space including addition of walls to classroom pods w/ adjacent flex learning areas
- New door hardware & electronic lock system
- Mechanical, electrical, plumbing improvements
- Remodeled library media center and collaborative learning spaces



Media Center

interior views



Sunflower Elementary School

Estimated Completion Date: December 2016

Bond Funds	Capital Outlay	Total
3,337,699	0	3,337,699



- New secure entry and office remodel
- New classrooms and learning pocket addition w/ shelter area
- Interior improvements of all existing space
- New door hardware & electronic lock system
- Mechanical, electrical, plumbing improvements
- Remodeled library media center and flexible learning spaces
- Site improvements

Pinckney Elementary School

Estimated Completion Date: July 2017

Bond Funds	Capital Outlay	Total
6,772,730	0	6,772,730

- New classrooms, kitchen and commons area
- New 6th St. entrance, office areas and secure entry
- Remodeling of all existing classrooms, media center w/ new learning pockets
- New door hardware & electronic lock system
- Mechanical, electrical, plumbing improvements
- Site improvements – parking, sidewalks, playground and landscaping

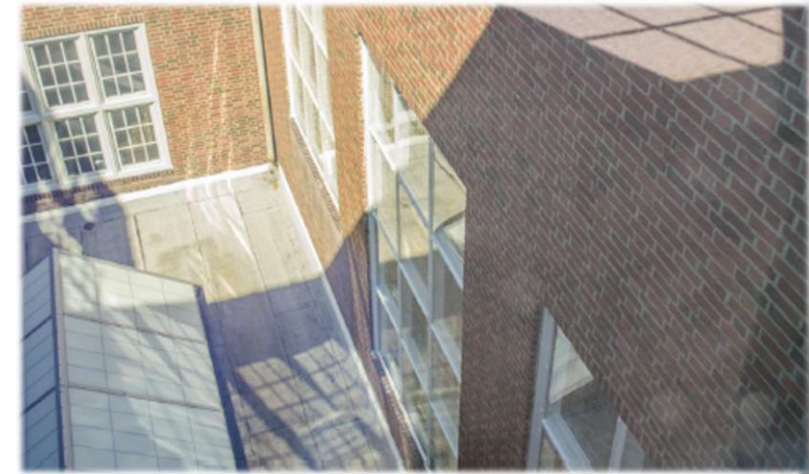


Liberty Memorial Central Middle School

Completed in August 2015

Bond Funds	Capital Outlay	Total
281,074	704,173	985,247

- New secure entry and flex conference
- Interior improvements – flooring and paint in hallways, new gym ceiling
- Exterior improvements – new storm windows, new section of roof, and skylight repairs
- New door hardware & electronic lock system
- New HVAC system and other mechanical, electrical, plumbing improvements



South Middle School

Completed in August 2015

Bond Funds	Capital Outlay	Total
386,839	88,100	474,939

- New secure entry and office remodel
- Mechanical, electrical, and plumbing improvements
- New door hardware & electronic lock system

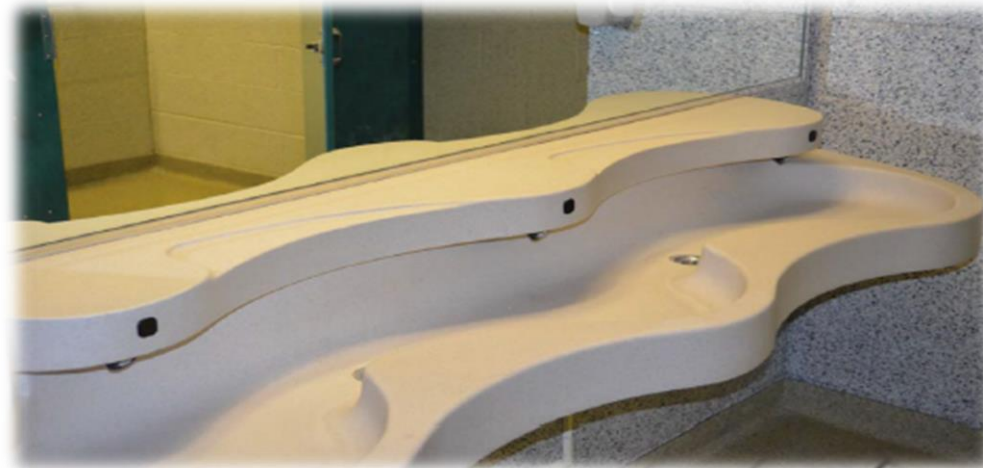


Southwest Middle School

Completed in August 2015

Bond Funds	Capital Outlay	Total
415,093	100,600	515,693

- New secure entry and flex conference area
- Mechanical, electrical, plumbing improvements
- New signage and way-finding
- New door hardware & electronic lock system



West Middle School

Completed in August 2015

Bond Funds	Capital Outlay	Total
1,497,027	572,306	2,069,333

- New secure entry and office remodel
- New classroom doors & electronic lock system
- Mechanical, electrical, plumbing improvements
- Remodeled kitchen and serving area, new equipment, new walk-in cooler



Lawrence College and Career Center

Completed in August 2015

Bond Funds	Capital Outlay	Total
6,964,786	212,361	7,177,147

- New 33,600 sq. ft. building filled w/ technology & flexible furnishings
- 21st century collaborative learning spaces for Career & Technical Education courses
- Secure entry and a storm shelter area
- High performance mechanical, electrical, and plumbing systems
- Outdoor learning spaces



Lawrence Free State High School

Completed in August 2015

Bond Funds	Capital Outlay	Total
4,010,020	641,943	4,651,963

- New office addition w/ a secure entry and flexible conference areas
- Remodel of existing offices into 21st century learning spaces
- Remodel of existing rooms for additional classroom spaces
- Mechanical and electrical improvements
- Site improvements including the addition of turn lanes for safe traffic flow



Lawrence High School

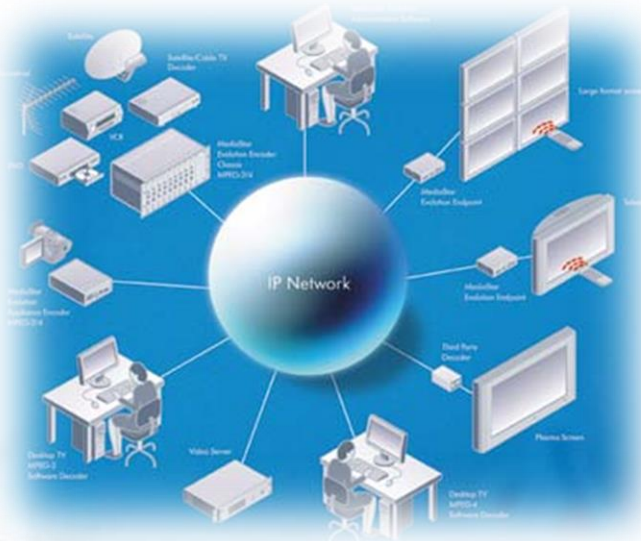
Estimated Completion Date: March 2016

Bond Funds	Capital Outlay	Total
3,672,600	660,038	4,332,638

- New secure entry w/ office and rotunda remodel
- Expansion of the cafeteria w/ outdoor student space
- New Black Box Theater and large flexible learning space
- New classroom doors & hardware
- Mechanical, electrical, plumbing improvements
- Site improvements – parking lot, driveway, green courtyard space between gyms



- **Wiring and Infrastructure through out the district**
- **Projectors**
- **Security Cameras**



Food Service Equipment

Bond Funds	Capital Outlay	KSDE Grant	Total
1,022,376	95,440	119,758	1,237,574

- Kitchen Equipment Upgrades
- Serving Trains
- Steamers, Freezers, Combi Ovens

West Middle School, Cordley, East Heights, Hillcrest, New York, Pinckney, South Middle School, Sunset Hill, Woodlawn



Lawrence Public Schools Bond Construction Update

December 14, 2015

*Detailed project summary documents
Can be found on the district webpage @
www.usd497.org*